

Keeping you informed

# Dogger Bank South Offshore Wind Farms

## Community Newsletter

### Welcome

## Significant step forward for DBS

**June 12 marked a major milestone in the development of DBS offshore wind farms. The team completed the environmental studies and submitted a Development Consent Order (DCO) application.**

It is a significant step forward for the Projects and marks the start of a new phase in the development consent order process. In this newsletter, we will describe how you can view the documents we have submitted, what happens next and how you can get involved in the consenting process to get your views heard.

We also have updates about continuing onshore and offshore site investigation activities that go beyond what was required for the application, our work on supply chain development and the new DBS branding.

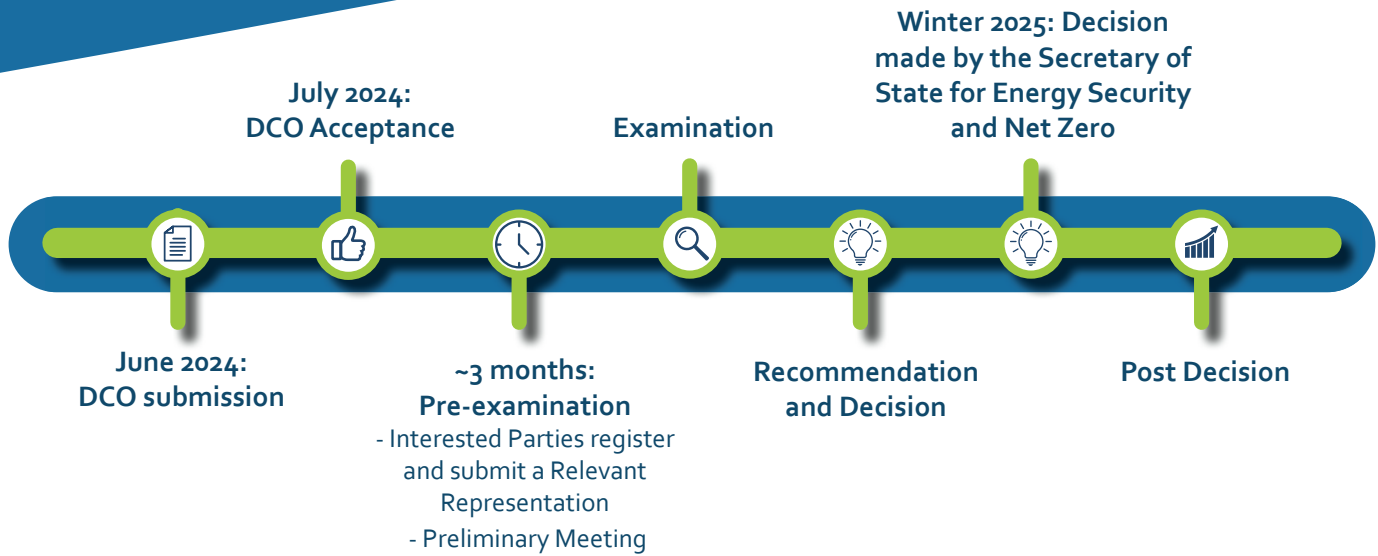


**Colin McAllister**  
Development Project Manager



**Rassim Hariz**  
Project Director

## Timeline showing DCO application process



## DCO Submission

We submitted the Development Consent Order application for the DBS offshore wind farms on 12 June 2024 and the Planning Inspectorate accepted our application on 10 July 2024. This means that the DBS projects move into the next phase of development – pre-examination followed by examination.

You can view and download the application form and all the accompanying documents, plans and Environmental Statement, including the Non-Technical Summary (NTS) from the Projects' page of the Planning Inspectorate's website under the 'Documents' tab:

<https://national-infrastructure-consenting.planninginspectorate.gov.uk/projects/ENo10125/documents>

The documents will remain available online throughout the pre-examination and examination process.

Printed copies of the NTS of the Environmental Statement (application ref: 7.0) and a Guide to the Application (application ref: 1.4) will be available in the following locations until at least the end of the representation period (closing on **06 September 2024**). Opening hours are subject to change, so please check before making a special trip. Most deposit locations have computer facilities available for public use which will allow access to the Environmental Statement and other consultation documents on the Planning Inspectorate website. The Non-Technical Summary and consultation documents are available on the DBS website.



**Driffield Centre,  
Cross Hill, Driffield YO25 6RQ  
Tel: 01482 393939**

Monday 9.30am – 6.30pm,  
Tuesday 9.30am – 4.30pm,  
Wednesday 9.30am – 4.30pm,  
Thursday 9.30am – 4.30pm,  
Friday 9.30am – 4.30pm,  
Saturday 9.30am – 12.30pm,  
Sunday Closed

**Beverley Library,  
Champney Road, Beverley HU17 8HE  
Tel: 01482 392750**

Monday 9.30am – 5pm,  
Tuesday 9.30am – 8pm,  
Wednesday 9.30am – 5pm,  
Thursday 9.30am – 8pm,  
Friday 9.30am – 5pm,  
Saturday 9am – 4pm, Sunday Closed

**Bridlington Central Library, King Street,  
Bridlington YO15 2DF  
Tel: 01262 672917**

Monday 9.30am – 5pm,  
Tuesday Closed,  
Wednesday 9.30am – 6pm,  
Thursday 9.30am – 3pm,  
Friday Closed,  
Saturday 9.30am – 1pm,  
Sunday Closed

**Cottingham Centre,  
Market Green, Cottingham HU16 5QG  
Tel: 01482 393939**

Monday 9.30am – 4.30pm,  
Tuesday 9.30am – 4.30pm,  
Wednesday Closed,  
Thursday 9.30am – 6.30pm,  
Friday 9.30am – 1pm,  
Saturday 9.30am – 12.30pm,  
Sunday Closed

**Greenwood Avenue Library,  
220 Greenwood Avenue, Hull HU6 9RA  
Tel: 01482 331257**

Monday 10am – 12.30pm and 2pm – 5pm,  
Tuesday Closed,  
Wednesday 10am – 12.30pm and 2pm – 6.30pm,  
Thursday Closed,  
Friday 10am – 12.30pm and 2pm – 5pm,  
Saturday 10am – 1pm,  
Sunday Closed

**Hornsea Library,  
Broadway, Hornsea HU18 1RU  
Tel: 01482 393939**

Monday 9.30am – 4.30pm,  
Tuesday 12.30pm – 6.30pm,  
Wednesday Closed,  
Thursday 9.30am – 1.30pm,  
Friday 9.30am – 4.30pm,  
Saturday 9.30am – 12.30pm,  
Sunday Closed

**Leven Library,  
74 East Street, Leven HU17 5NG  
Tel: 01964 543360**

Monday Closed,  
Tuesday Closed,  
Wednesday 10.30am – 12.30pm and 3.30pm – 7pm,  
Thursday Closed,  
Friday Closed,  
Saturday Closed,  
Sunday Closed

**Bridlington Community Hub,  
1st Floor 2a Marshall Avenue,  
Bridlington YO15 2DS  
Tel: 01482 871077**

Monday 10am – 4.30pm,  
Tuesday 10am – 4.30pm,  
Wednesday 10am – 4.30pm,  
Thursday Closed,  
Friday Closed,  
Saturday Closed,  
Sunday Closed

All the application documents are available online on the Planning Inspectorate website  
<https://national-infrastructure-consenting.planninginspectorate.gov.uk/projects/EN010125/documents>

Requests for a printed version of the full suite of application documents, which total around 500,  
and requests for alternative formats (braille, other languages, etc) will be considered on a  
case-by-case basis. For all document requests, please contact DBS directly.

**Email: [dbs@rwe.com](mailto:dbs@rwe.com) Telephone: 0800 254 5459 Post: FREEPOST DBSOWF**

# How to get involved

## Pre-examination:

This is an opportunity to share your views about the projects. To do so, you need to register with the Planning Inspectorate between 26 July and 06 September 2024 to become an Interested Party and share your views in writing – this is called making a Relevant Representation and can be done online at <https://national-infrastructure-consenting.planninginspectorate.gov.uk/projects/ENo10125>.

If you require a paper copy of the Registration and Relevant Representation form, please telephone the Planning Inspectorate on 0303 444 5000. Send completed paper forms to The Planning Inspectorate, National Infrastructure Directorate, Temple Quay House, Temple Quay, Bristol BS1 6PN. The application reference ENo10125 should be quoted in any correspondence.

Additional guidance about how to register and make a Relevant Representation can be found on the Planning Inspectorate website:

- **Video guidance:**  
<https://infrastructure.planninginspectorate.gov.uk/application-process/participating-in-the-process/>
- **Written guidance:**  
<https://www.gov.uk/government/collections/national-infrastructure-planning-advice-notes>

Please allow enough time for delivery if submitting a Representation by post.

## Use of personal data:

### Things you need to know

- Personal data and correspondence relating to any Representation will be made publicly available.
- If you do not want your personal data made public by the Planning Inspectorate, clearly state why when submitting the Representation, and it can be published without your details. Note however, that without the inclusion of personal data, your Representation may be given less weight during the Examination.
- All submitted Representations will be published on the Planning Inspectorate's website and will be subject to its privacy policy, found online here: <https://www.gov.uk/government/publications/planning-inspectorate-privacy-notice/customer-privacy-notice>.

## Examination:

The Planning Inspectorate has up to six months to carry out the Examination. During this stage Interested Parties who registered and made a Relevant Representation are invited to provide more details about their views in writing and at hearings on dates which are set at the end of the pre-examination period.

The Examining Authority carefully considers all the important and relevant matters including the Representations of all Interested Parties, any supporting evidence submitted, and answers provided to the Examining Authority's questions set out in writing or posed at hearings.

You can find out how to take part at an issue-specific hearing by watching a Planning Inspectorate video and reading its written guidance:

- **Video guidance:**  
<https://youtu.be/nplL8icVrGI>
- **Written guidance:**  
<https://infrastructure.planninginspectorate.gov.uk/video-transcript-how-to-take-part-in-an-issue-specific-hearing/>

## **Recommendation and decision:**

The Planning Inspectorate will prepare a report on the application for the Secretary of State for Energy Security and Net Zero. This report will include a recommendation and will be submitted within three months of the close of the Examination stage.

The Secretary of State then has a further three months to make the decision on whether to grant or refuse development consent.

## **Post decision:**

Once a decision has been made and published, there is a six-week period in which the decision may be challenged in the High Court. This process of legal challenge is known as Judicial Review.



## **Definitions:**

### **The Planning Inspectorate**

An agency that deals with national infrastructure planning applications in England.

### **Interested Party**

A person or organisation that has an interest in the DBS Offshore Wind farms application.

### **Relevant Representation**

A summary of a person's views about an application, made in writing.

### **Local Planning Authority**

East Riding of Yorkshire Council.





The Fugro Quest

## Site investigations

**Two contractor companies, Fugro and Ocean Infinity, began detailed offshore surveys of the ground conditions in the area of the proposed DBS West offshore wind farm.**

The surveys will involve geotechnical and geophysical techniques and will provide an accurate picture of the conditions on and under the surface of the seabed at the proposed locations of the turbine foundations. The geotechnical surveys will also investigate a small segment of the offshore export cable route entering the DBS West array.

Colin McAllister, Development Project Manager, DBS said: "We already have high-level data about the seabed conditions from reconnaissance surveys conducted in 2022. The new surveys, however, will provide even more detailed information which will help us to design the most effective foundations for each turbine and platform in the project. We expect similar detailed surveys to take place at DBS East in the future."

## New branding and logo

**You have probably noticed that our Summer newsletter has a new look and includes a new logo for the DBS offshore wind farms.**

RWE and Masdar remain owners of the projects, however, since we announced our partnership with Masdar in December 2023 we have taken the opportunity to develop a unique, personal identity for DBS. We hope this will help to identify the projects more clearly as they progress, making it easier to share our news and demonstrate our involvement in events and activities in the future.



Archaeological excavation in progress

## Archaeology

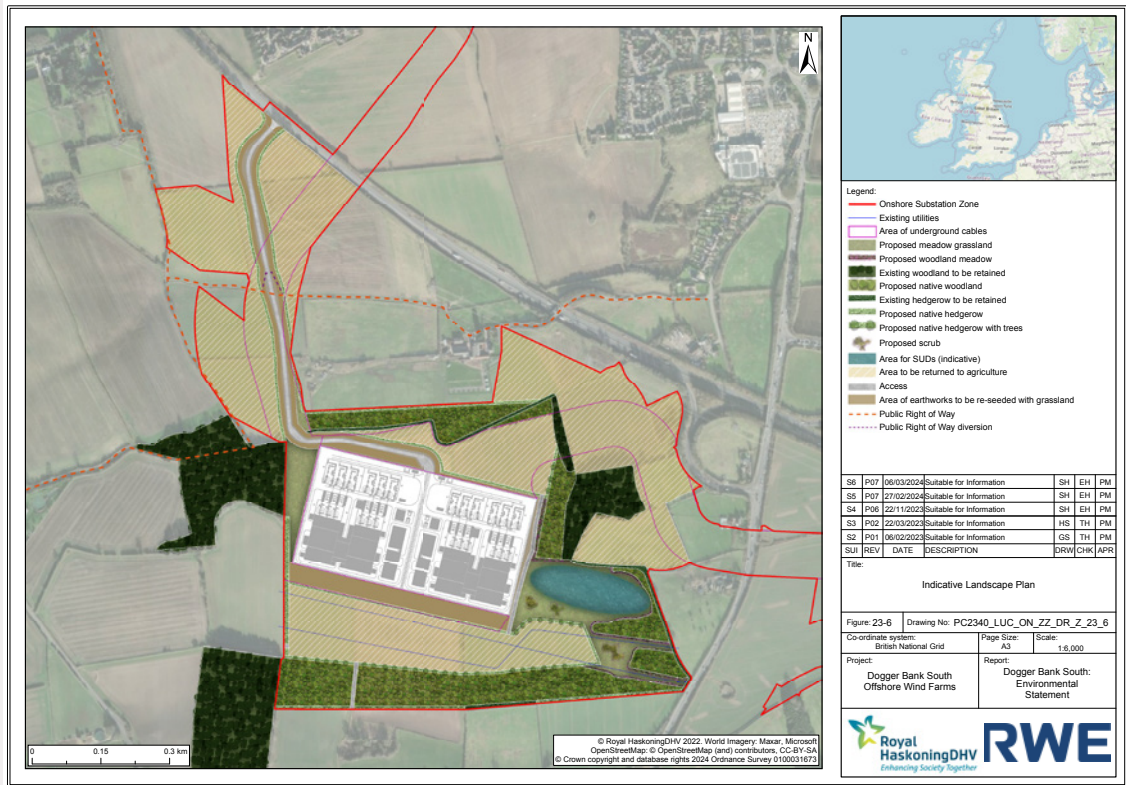
**Archaeological trial trenching re-commenced in May 2024. This year's surveys will focus on six key areas of the onshore export cable corridor.**

The survey areas include a section of the cable route entering the area where the proposed converter stations would be located near Bentley, and areas in Routh, Nunkeeling, and Catfoss.

The works are going well, with investigations at Routh showing evidence of Iron Age and Romano-British agricultural field systems, although not much evidence of settlement activity. Excavations at Catfoss are showing higher density archaeology, indicating previous settlement of the area and confirming the results of our previous geophysical surveys. Noteworthy findings from our archaeological investigations will be shared with the public in due course, as detailed in our Public Outreach/Community Engagement strategy, which can be found in the Outline Onshore Written Scheme of Investigation (application ref: 8.14).



A ceramic pot lid, most likely 'greyware' of Roman date



Indicative landscape plan

## Screening plans for the Onshore Converter Stations

An Outline Landscape Management Plan (application ref: 8.11) has been developed for the Onshore Converter Stations that is sympathetic to the landscape and maximises biodiversity.

This has been developed in consultation with the East Riding of Yorkshire Council. The design, which will provide screening for the Onshore Converter Stations, includes:

- Tree belts to north and south, including a wider tree belt to the south due to the elevated nature of the site;
- Planting with locally native species where feasible, including a mix of ash, sycamore, oak, sweet chestnut, scots pine and hazel;
- Sustainable Drainage (SuDS) integrated into the design;
- Retain existing woodland as screening and basis for structure: and

- Planting new hedgerow boundaries taking existing high pressure gas pipelines on the site into consideration.

The environmental assessments assume planting will mature over 10 years, helping to mitigate visual effects, where possible. The planning application also includes a Design and Access Statement (application ref: 8.8) which sets out design principles which will be followed when we develop the detailed design for the Onshore Converter Stations prior to construction. An outline Biodiversity Net Gain Strategy (application ref: 7.18.18.10) has also been developed which considers how the projects could maximise their biodiversity opportunities.

# Local Liaison Committee meetings

The second set of Local Liaison Committee meetings are due to take place in mid-July between DBS team members and local parish council representatives.

The meetings were established in early 2024 to facilitate more effective communication between the DBS team and the local community about the progress and delivery of the projects. The meetings focus on activities associated with the onshore development and

potential construction of the projects in three key areas:

- The area where the offshore export cable comes ashore (landfall);
- The onshore export cable route;
- The converter stations.

## Supply chain

**It may seem early to be considering potential suppliers for the DBS projects given where we are in the developing and consenting process, but engaging early is beneficial for all involved.**

It helps to maximise UK supplier opportunities and facilitate supply chain growth for the benefit of any UK offshore wind project that successfully moves from development and into construction.

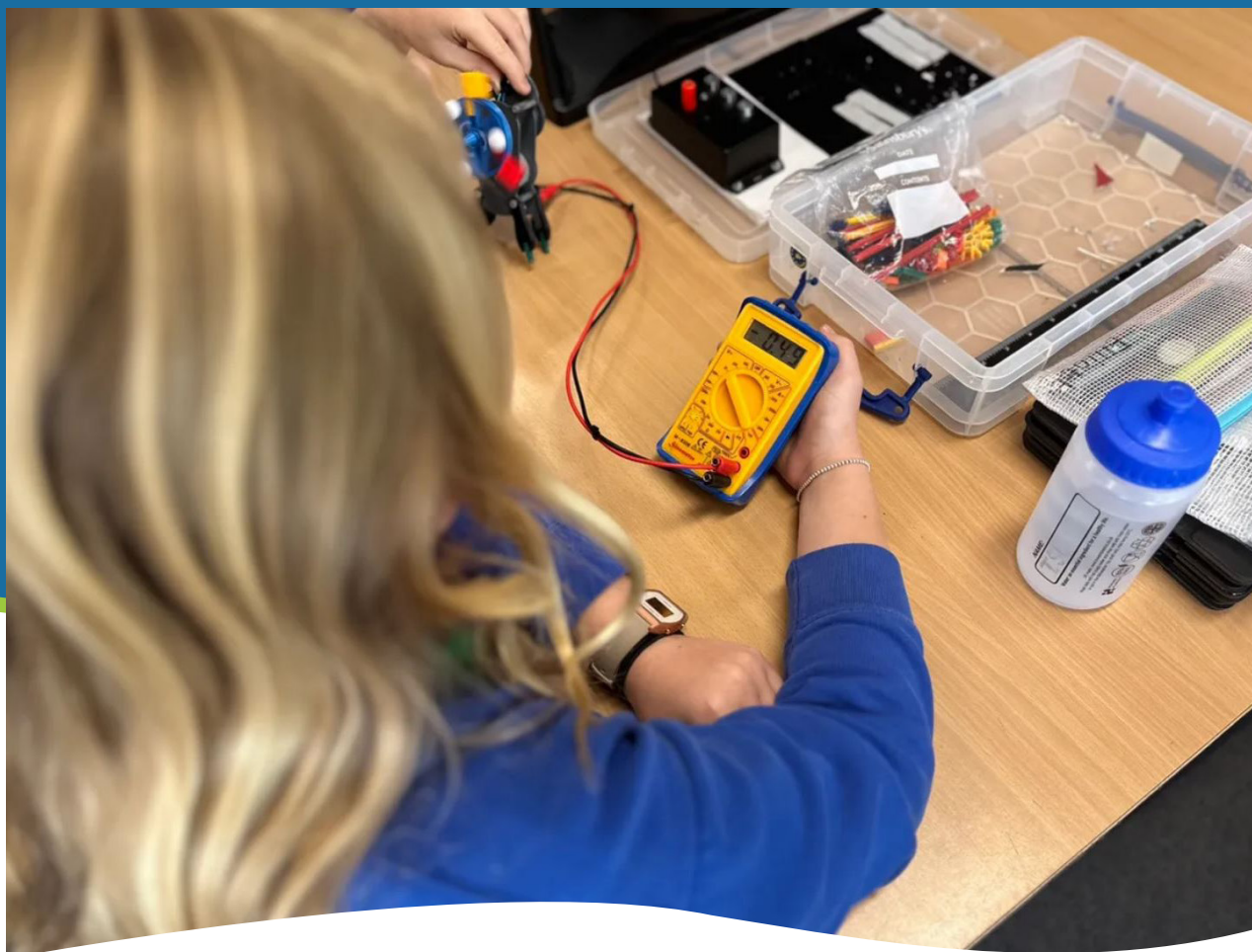
If you work for a company within the offshore wind sector and would like to find out about

potential opportunities to work with DBS in the future or with other projects in the RWE portfolio, please consider registering for RWE's Supplier Transparency Engagement Programme (STEP).

<https://rwe.supplierengagementplatform.com/supplier-registration/>

Suppliers that register are part of an open-search database, receiving project updates and regular opportunities to meet with supply chain managers involved in RWE's UK projects progressing through development and construction.





Pupils engaged in STEM activities

## DBS partnership with primary schools

**In June 2024, we launched a new initiative with eight East Riding primary schools.**

The DBS Primary Schools Engagement Programme aims to work with the local community along the proposed onshore export cable route for the DBS projects from Skipsea, where the cables would make landfall, to the new converter stations to the south of Beverley in the East Riding of Yorkshire.

The engagement with primary schools will raise awareness of the offshore wind sector and the variety of skills and careers associated both directly and indirectly with the industry via a range of fun and engaging

STEM activities for children aged 9-11 years of age. Molescroft Primary School in Beverley was the first to participate where 60 Year 6 pupils took part in a STEM activity day. The children enjoyed a practical wind turbine business game working in teams as engineers and designers to design wind turbine blades and work out which blade angles produce the most cost-effective energy. They also learned about developing wind farms at sea and the vast range of careers and skills required to support the sector.

**“It’s been a very engaging day which the children have loved. The activity has highlighted every part of STEM, which is a big feature at our school and has also shown the children real life application for maths.”**

Year 6 teacher at Molescroft Primary School Ben Rowsell said: “It’s been a very engaging day which the children have loved. The activity has highlighted every part of STEM, which is a big feature at our school and has also shown the children real life application for maths.

“Any example where you can show children how science and maths is used in the real world and in the future is so useful. The careers element of the day has been a key part in showing the children the jobs that they could be doing in the future. It’s been a really exciting day, and the expertise in delivery and quality of the resources has been excellent.”

RWE representative and Managing Director of UKSTEM Ltd Mike Cargill added: “It’s been great to launch the DBS School’s Engagement Programme at Molescroft Primary School. It was superb to see how engaged and enthusiastic the children were in taking part in the activities today. They were keen to learn about the industry and asked many fantastic questions about how offshore wind farms are developed and constructed. We hope that the programme will provide them with lots to think about and consider how they too could get involved in the future.”



Model wind turbine, part of the Investigation Activity Pack



# Young RWE technician wins regional award

RWE apprentice Ryah Russell has scooped a high-profile regional award. She was named Apprentice of the Year at the Humber Renewables Awards in May in recognition of her work at RWE's operational Triton Knoll Offshore Wind Farm.

Now in its 12th year, the awards shine a light on businesses that are contributing to the growth of the renewable energy sector in the Humber region, which has gained an enviable reputation as the UK's Energy Estuary and is at the forefront of the country's zero-carbon ambition.

Ryah started with the basics and has quickly grown into a competent wind turbine technician. Now in her final year, Ryah is a STEM ambassador and actively promotes apprenticeships at RWE.

RWE was also awarded Medium/Large Business of the Year in recognition of its investment in the region.

"I'm so happy to have won this award and am really proud of myself," said Ryah. "The past few years in my apprenticeship have been amazing and I couldn't imagine myself doing anything else. It really has set me up in a career for life. I look forward to developing in my role and encouraging more young people to get into the industry!"



Ryah Russell, apprentice at RWE



 **DBS**  
Offshore Wind

## Further information

For more information on the projects, please visit our website at [www.doggerbanksouth.co.uk](http://www.doggerbanksouth.co.uk)

## Contact us:

Email: [dbs@rwe.com](mailto:dbs@rwe.com)

Telephone: 0800 254 5459

Website: [www.doggerbanksouth.co.uk](http://www.doggerbanksouth.co.uk)

Post: FREEPOST DBSOWF

